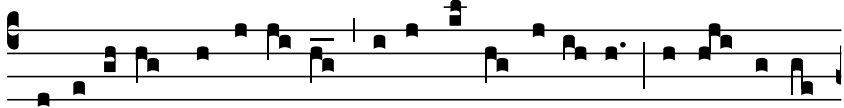
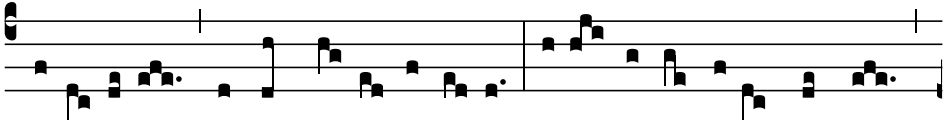



E




N a-cétum, fel, a-rúndo, sputa, cla-vi, lánce- a; mi-te corpus



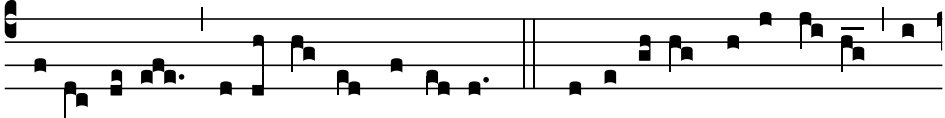
perfo-rátur, sanguis, un-da próflu-it; terra, pontus, astra, mundus




quo la-vántur flúmi-ne! 2. Crux fí-de-lis, inter omnes arbor u-na nóbi-




lis! Nulla talem sil-va profert flo-re, fronde, gérmí-ne. Dulce lignum,



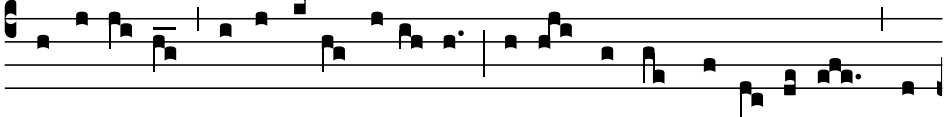
dulci clavo dulce pondus sús-ti-nens! 3. Flecte ramos, arbor al-ta, ten-



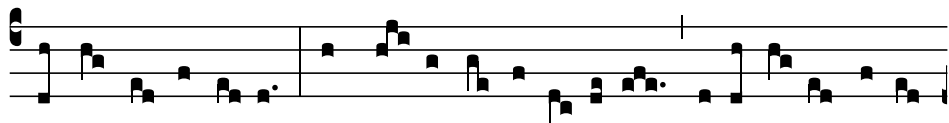
sa la-xa vísce-ra, et ri-gor len-té-scat il-le quem dedit na-tí-vi-



tas, ut su-pérni membra re-gis mi-ti ten-das stí-pi-te. 4. So-la dí-gna



tu fu-í-sti fer-re sæcli pré-ti-um, at-que portum præpa-rá-re nau-



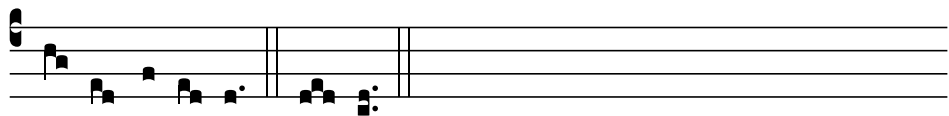
ta mundo náufra-go, quem sa- cer cru-or perúnxit fusus A- gni córpo-



re. 5. Æqua Patri Fi-li- ó- que, ín-cli-to Pa- rá-cli- to, sempi- terna sit



be- á-tæ Trini-tá- ti gló-ri- a; cuius al-ma nos red-é-mit atque



ser- vat grá-ti- a. A- men.